

Meeting & Event room capacities

Name	Theatre	U-shape	Cabaret	School	Carre	Board-room	Reception	Dinner	Day-light
New York I	50	24	32	36	30	18	70	40	Yes
New York II	60	24	32	36	30	18	70	40	Yes
New York	130	52	72	80	60	40	140	80	Yes
Sydney	60	23	28	44	38	30	100	50	Yes
Paris	75	26	36	56	32	26	100	50	Yes
Rome	-	-	-	-	-	12	-	-	No
Tokyo	-	-	-	-	20	20	-	20	No
Berlin	40	18	24	33	24	22	-	30	Yes
London I	50	24	32	36	30	18	70	40	Yes
London II	60	24	32	36	30	18	70	40	Yes
London	120	52	72	80	60	40	140	80	Yes
MOMO Exclusive <small>(Private Dining)</small>	-	-	-	-	-	-	-	20	No



Meeting & Event room measurements

Name	m ²	Length	Width	Height
New York I	68	7.8	8.7	3.1
New York II	76	8.7	8.7	3.1
New York	144	16.5	8.7	3.1
Sydney	107	9.5	11.3	2.9
Paris	113	10	11.3	3.05
Rome	45	7.2	6.2	3.2
Tokyo	91	11.7	7.8	2.2
Berlin	70	10	7	3.2
London I	72	9.8	7.3	3.2
London II	88	12.1	7.3	3.2
London	160	21.9	7.3	3.2
MOMO Exclusive <small>(Private Dining)</small>	91	11.7	7.8	2.2



meetings@parkhotel.nl
T +31 (0)20 710 72 31

PARK HOTEL
AMSTERDAM

Paris & Sydney

Located in the lower foyer, both unique meeting rooms are designed to direct all attention toward the screen, which has produced an efficient and well-organized environment completely free from distraction. Each space resonates with the hotel's signature blend of understated sophistication and ambience. Both rooms are equipped with the latest audio/visual technology including I-pod connections.

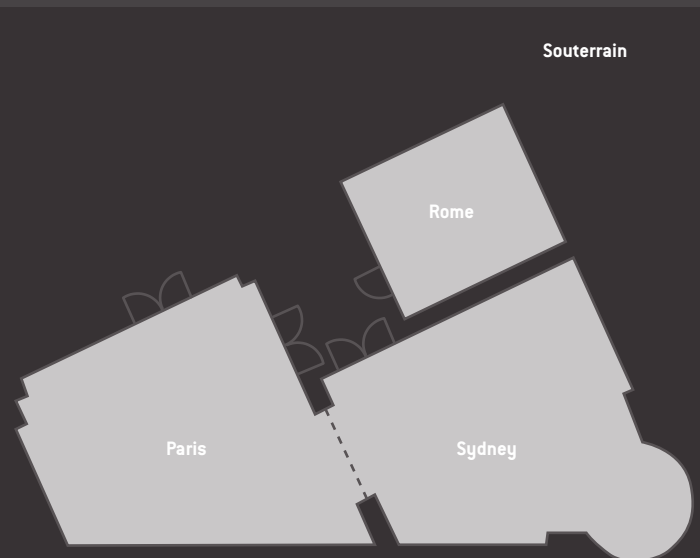


Rome

This unique boardroom features a 2 by 1m flat screen TV for interactive projection and video conference calling options and I-pod connections. A fixed custom made dark wood boardroom table and comfortable executive chairs with the finest amenities are waiting for your delegates. Conveniently located steps away from other meeting venues in the hotel, it affords executives an intimate space for top-level meetings.

Room Dimensions:	Paris	Sydney	Rome
Size (L x W) (m)	10 x 11.3	9.5 x 11.3	7.2 x 6.2
Surface area (sqm)	113	107	45
Ceiling height (m)	3.05	2.9	3.2
Daylight	Yes	Yes	No
Removable wall	Yes	Yes	No

Capacities:	persons		
Theatre	75	60	-
U-shape	26	23	-
Caberet	36	28	-
School	56	44	-
Carre	32	38	-
Boardroom	26	30	12
Reception	100	100	-
Diner	50	50	-



New York I & II

The Event Room New York is equipped with the most modern audio equipment and can be divided into two sections. The facility's unique ambient light option enables the colour of the room to be changed to fit the mood of the event, while the arrangement of the room can be adjusted to the needs of your personalized event. The New York rooms features the latest audio/visual technology including I-pod connections.

Our events team will be delighted to assist with all of your events and special occasion requirements. They will instinctively and thoughtfully respond to your needs on a personal level, leaving you feeling energized and relaxed and able to fully enjoy your perfect day. With inspiring details and delightful cuisine, every sight, sound, and flavour of a Park Hotel event is carefully selected to reflect your individuality. Working with you to develop innovative and unique solutions, we deliver highly professional events including conferences, product launches, swirling fashion shows, gala events, incentives, media launches, and corporate functions. From creative ideas, styling and theming, through to audiovisual and technical production management, we're with you every step of the way.



Room Dimensions:	New York I	New York II	New York I & II
Size (L x W) (m)	7.8 x 8.7	8.7 x 8.7	16.5 x 8.7
Surface area (sqm)	68	76	144
Ceiling height (m)	3.1	3.1	3.1
Daylight	Yes	Yes	Yes
Removable wall	Yes	Yes	Yes

Capacities:	persons		
Theatre	50	60	130
U-shape	24	24	52
Caberet	32	32	72
School	36	36	80
Carre	30	30	60
Boardroom	18	18	40
Reception	70	70	140
Diner	40	40	80

Ground floor

New York II

New York I

London I & II

Located at the 2nd floor, London offers 160 sqm and is unique because of the floor-to-ceiling windows. The space is flooded with natural light for day-time events. Double glassed windows secure a meeting without the hustle from the street. The bright coloured interior and the large windows give a superb surrounding for optimal concentration. The perfect meeting room for product presentations and multiple day congresses. The room can be split in two separate meeting rooms or one large room. Together with a comfortable climate control system, high tech equipment and lot's of daylight this room is one of the best plenary rooms to be found in the city.

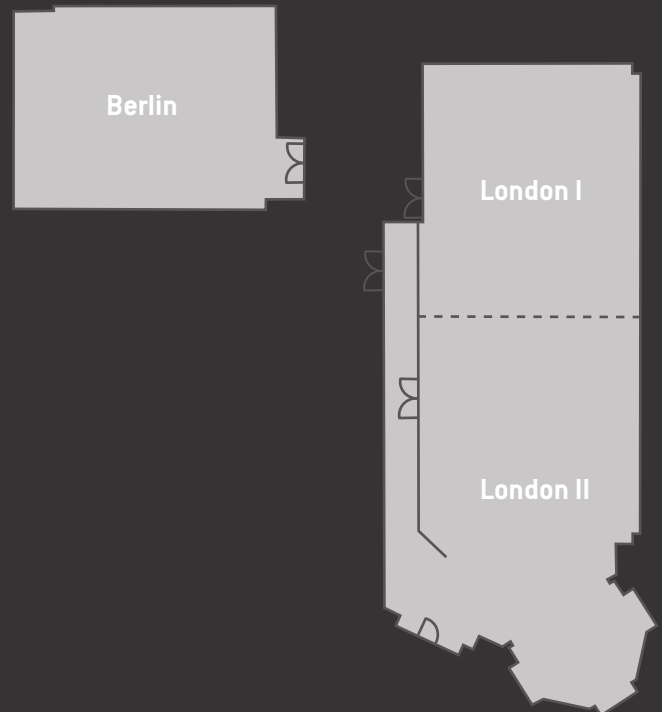


Berlin

Opposite the airy London rooms you find the Berlin which can easily be used as a break-out room, boardroom or for smaller meetings. The comfortable and stylish ergonomic furniture is offset by detailed designs. All wiring of the rooms' technology has been carefully imbedded, creating an attractive, un-cluttered appearance.

Room Dimensions:	London I	London II	London I & II	Berlin
Size (L x W) (m)	9.8 x 7.3	12.1 x 7.3	21.9 x 7.3	10 x 7
Surface area (sqm)	72	88	160	70
Ceiling height (m)	3.2	3.2	3.2	3.2
Daylight	Yes	Yes	Yes	Yes
Removable wall	Yes	Yes	Yes	No

Capacities:	persons			
Theatre	50	60	120	40
U-shape	24	24	52	18
Caberet	32	32	72	24
School	36	36	80	33
Carre	30	30	60	24
Boardroom	18	18	40	22
Reception	70	70	140	-
Diner	40	40	80	30



Tokyo

This contemporary 91 square meter space is a decision-maker's best friend, equipped with the latest audio/visual technology including I-Pod connections. The Tokyo boardroom is located at the first floor and has a true unique ceiling with high end light fixtures and features custom made dark wood tables to comfortably accommodate up to 20 guests.

Room Dimensions:	Tokyo	MOMO Exclusive (Private Dining)
Size (L x W) (m)	11.7 x 7.8	11.7 x 7.8
Surface area (sqm)	91	91
Ceiling height (m)	2.2	2.2
Capacities:	persons	persons
Carre	20	-
Boardroom	20	-
Diner	20	20



The new standard for coffee is now available. Fully automatic combination machines for coffee specialties like espresso, café crème, cappuccino, white coffee, latte macchiato are waiting for your delegates.

Technology plays an ever increasing role in today's conferences, meetings and events. For larger events or where there are several events across several countries or even continents the iBAHN's Enterprise Conference Solution (ECS) will provide extra help and support for more challenging and demanding events. No event is too big or too small - from a single connection to multiple connections across multiple venues or rooms.

MOMO Exclusive (Private Dining)

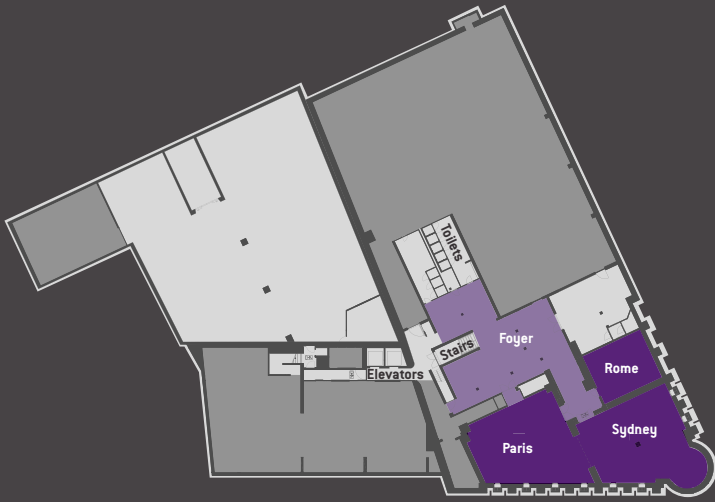
Entertain your private party in Amsterdam's newest, most private and luxurious setting. On the first floor above MOMO Restaurant, Bar & Lounge, you will find MOMO Exclusive, one stunning private dining room that can be reserved by guests for private luncheons, dinners or banquets. MOMO Exclusive can host up to 20 guests and is fully equipped with state of the art audio visual equipment including iPod connection. Aromas and colors of the Pan Asian cuisine find fresh ground in this sophisticated room. Inspired by Pan Asian tradition and based on genuine flavors, MOMO Exclusive offers a singular interpretation of Pan Asian cooking with a contemporary accent. Customized menu offerings with optional wine pairings and prepared by our executive chef render every dish and exquisite experience to be enjoyed and remembered.

For more information, please contact one of our Meeting & Events consultants; privatedining@momo-amsterdam.com

First floor

MOMO
Exclusive

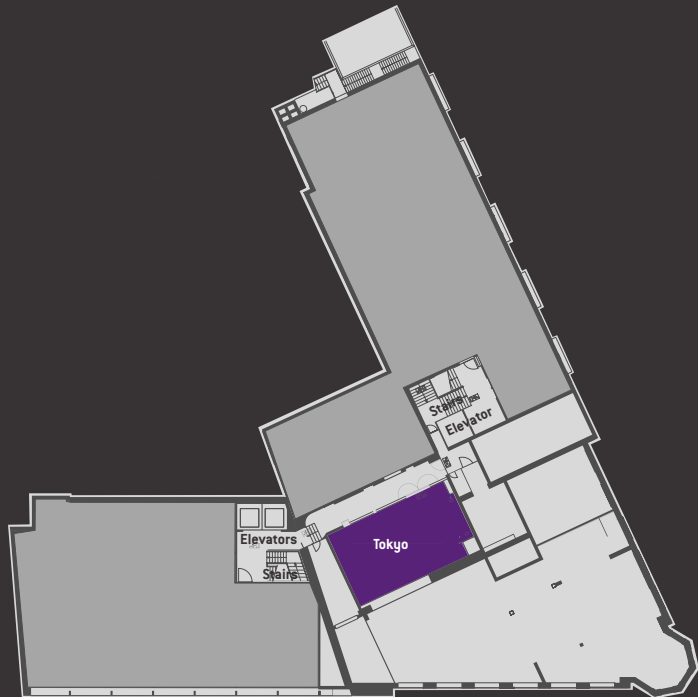




Souterrain



Ground floor



First floor



Second floor